

[TopPage](#)>>[Search Result](#)>>7216C

# Angular Contact Ball Bearings

Bearing No. : **NACHI 7216C**

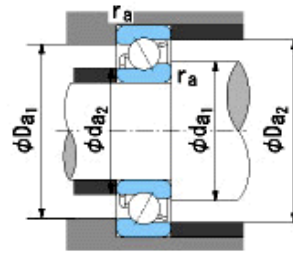
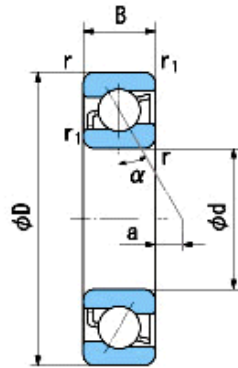
■ Bearing Type

■ Clearance

■ Tolerance Class

## Dimensions

d = 80 0  
-0.015  
D = 140 0  
-0.018  
B = 26 0  
-0.150  
r = 2~3  
(Radial Direction)  
r = 2~4.5  
(Axial Direction)  
r1 = 1~1.9  
(Radial Direction)  
r1 = 1~3  
(Axial Direction)  
a = -0.3



## Dimensions

da1(min) = 90  
da2(min) = 90  
Da1(max) = 130  
Da2(max) = 134  
ra(max) = 2  
ra1(max) = 1  
Mass = 1.50 kg

Basic Dynamic Load Rating Cr : **93,500** N

Basic Static Load Rating Cor : **78,000** N

Limiting Speed ;

Grease Lubrication : **7,300** min<sup>-1</sup>

Oil Lubrication : **10,000** min<sup>-1</sup>

O.D.Surface Runout with Side :

Axial Runout with Bore :

Axial Runout with Raceway :

Width Variation :

Radial Runout :

INNER RING

OUTER RING

-

-

-

**0.025**

**0.020**

-

-

-

**0.025**

**0.040**